

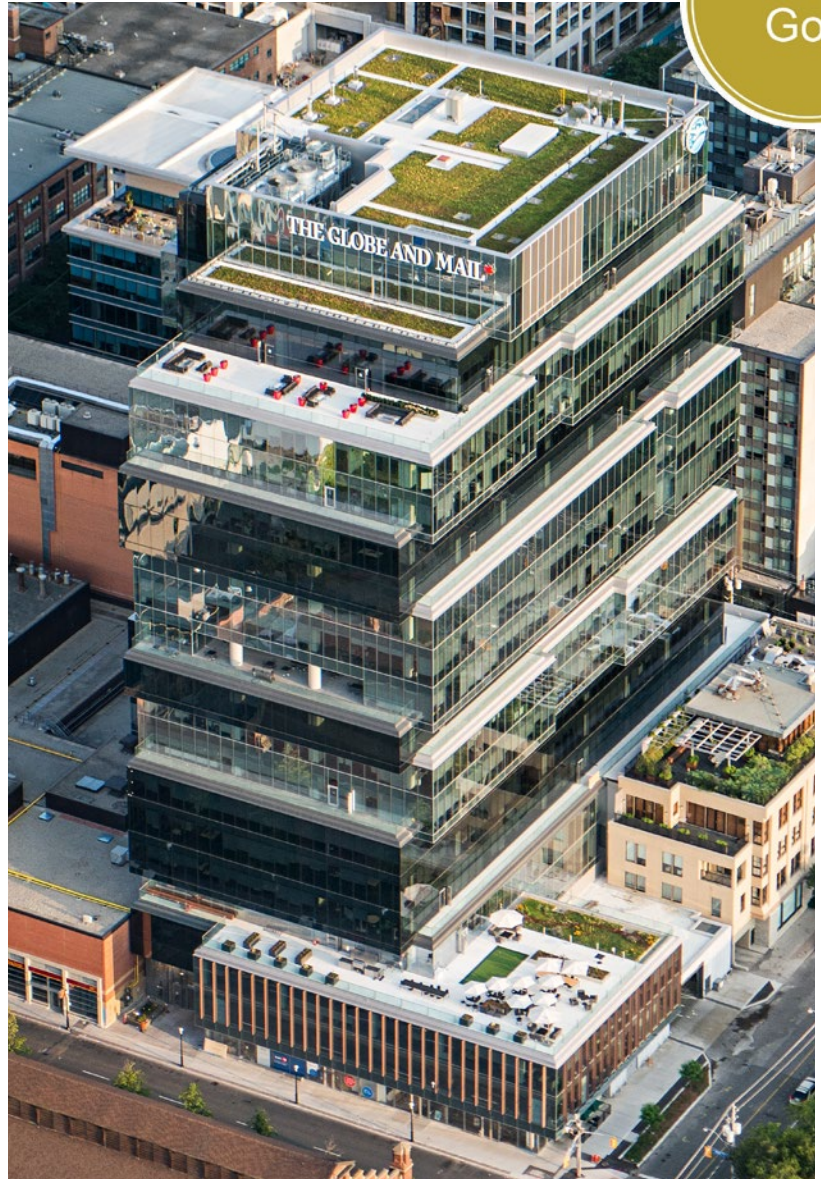


THE GLOBE AND MAIL CENTRE

LEED Gold

The Globe and Mail Centre is located in Toronto’s King East Design District. Designed by Diamond Schmitt Architects Inc., this 17 storey office building is the home to one of Canada’s national newspapers, the Globe and Mail. The 500,000 ft² First Gulf building is the largest office development east of Yonge Street along King Street, and features 10’ high full height windows for plentiful natural light and spectacular views of downtown and the lake.

The HIDI Group provided mechanical, electrical, communications and security design for the development. The building has a four-storey podium, sitting on top of multiple storeys of underground parking. The tower is made up of thirteen storeys of office space while the ground floor houses multiple retail shops. The project offers an underfloor distribution system, the availability of emergency power for tenants, and customization to suit prospective tenants in addition to the building’s green roof for storm water management. This Class A Urban Office Building is LEED Gold certified.



8 DISCIPLINES
MECHANICAL
ELECTRICAL
PLUMBING
LIGHTING DESIGN
COMMUNICATIONS & AV
SECURITY & RISK
COMMISSIONING
ENERGY SERVICES

-
- LOCATION** Toronto, Canada
- CLIENT** Diamond Schmitt Architects inc.
- OWNER** First Gulf
- ARCHITECT** Diamond Schmitt Architects Inc.
- SIZE** 500,000 ft²
- COMPLETION YEAR** 2016
- LEED** Gold
- AWARDS** REX Award for Office Development of the Year 2018
- MARKET SECTOR** Commercial