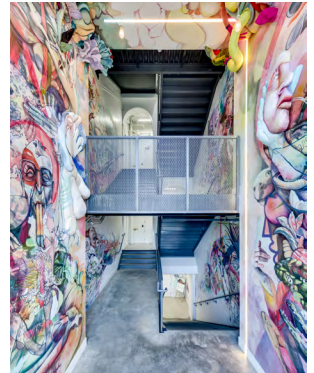
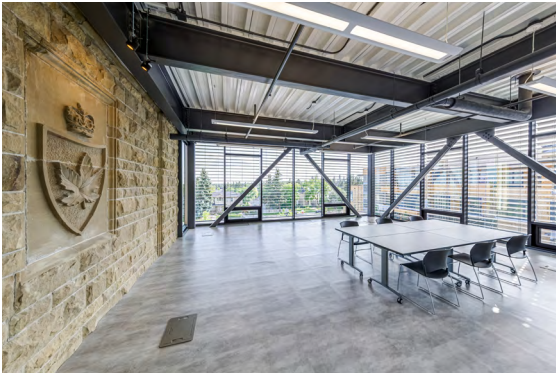




KING EDWARD ARTS HUB AND INCUBATOR



The HIDI Group provided mechanical, plumbing and energy modelling for the adaptive reuse of a 1912 heritage building, which also included two new art pavilions. The facility offers mixed-use creative spaces for professional arts, social innovation and community development; including, production and rehearsal spaces; workshops; meeting rooms; innovation space; business services; spaces for public art; collaboration technology; and areas for interaction and community gatherings.



- MECHANICAL
- ELECTRICAL
- PLUMBING
- LIGHTING DESIGN
- COMMUNICATIONS & AV
- SECURITY & RISK
- COMMISSIONING
- ENERGY SERVICES

The overall size of the development is approximately 50,000 ft². The project LEED Gold certified, with energy targets approximately 60% better than model energy code, while maintaining the existing envelope.

- LOCATION:** Calgary, Alberta
- CLIENT:** cSPACE Projects
- ARCHITECT:** Nyhoff Architecture
- SIZE:** 44,000 ft²
- CONSTRUCTION VALUE:** \$15 Million CAD
- PROCUREMENT TYPE:** Construction Management
- COMPLETION YEAR:** 2017
- LEED:** Gold
- MARKET SECTOR:** Institutional